

# Environmental Management

## Promotion Framework

The Board of Directors is the highest-level body responsible for environmental management in the TOPPAN Group. The Board appoints an officer to head the Ecology Center, an organization that oversees our environmental conservation initiatives by supervising, evaluating, and verifying environmental activities undertaken throughout the Group and reporting the verification results to the Board of Directors.

We have established an environmental conservation framework in which the heads of the business divisions, Group companies, and operational sites are responsible for the environmental efforts of their organizations. These heads appoint environmental management personnel to steer the actual implementation of conservation activities carried out at their sites and collaborate with them to propel environmental initiatives throughout the business divisions.

To accelerate the initiatives, environmental management personnel have set up Eco-protection Promotion Committees, bodies composed of persons relevant to the environment across the departments. The committees promote environmental conservation activities and manage their progress. For advanced environmental measures, the committees have convened multiple subcommittees to formulate necessary responses to specific environmental issues. Energy Subcommittees, for example, pursue energy-saving efforts to contribute to decarbonization.

## Addressing Climate Change Risks

TOPPAN has set up a Global Environment Working Group under the Sustainability Promotion Committee. Composed of

departments relevant to the environment, the working group employs scenario analyses to identify significant risks and opportunities brought by climate change and to evaluate mainly the financial impacts on the Group.

We will also further advance global-warming mitigation initiatives focused on climate change and decarbonization in cooperation with various industry groups that are working towards the Paris Agreement goals.

### TOPPAN's Environmental Management Structure



## Environmental Management Systems

TOPPAN has established environmental management systems (EMSs) based on ISO 14001.

A PDCA cycle of planning, support and operation, performance evaluation, and improvement serves as a core part of the ISO 14001-based EMSs to ensure continual

improvement in environmental management.

Group sites maintain their EMSs through management system audits by ISO 14001 registrars, internal environmental audits (of legal compliance) by the Ecology Center, and other internal environmental audits at individual sites.

•ISO 14001 certification: 98 sites (out of 168 Group sites)

\*The Ecology Center supervises and assesses environmental conservation activities implemented at the remaining 70 sites.

The Ecology Center aggregates environmental performance data as the organization responsible for overseeing environmental conservation activities across the Group. The aggregation results are assured by KPMG AZSA Sustainability Co., Ltd. (an independent assurance provider) and reported to the Board of Directors (for details, see “Boundary of Data Coverage and List of Indicators Assured by an Independent Assurance Provider” on page 184). The center discloses the verified performance data via the TOPPAN corporate website and other communication channels.

For environmental targets, in particular, the Ecology Center decides a set of site-specific, single-year targets based on the Groupwide targets and develops current-year measures with authorization from the Board of Directors. These site-specific targets are treated as key performance indicators for managing the progress of environmental conservation activities carried out at individual sites. The Ecology Center also manages the monitoring of soil and groundwater pollution, ascertains the results, and discloses the details.

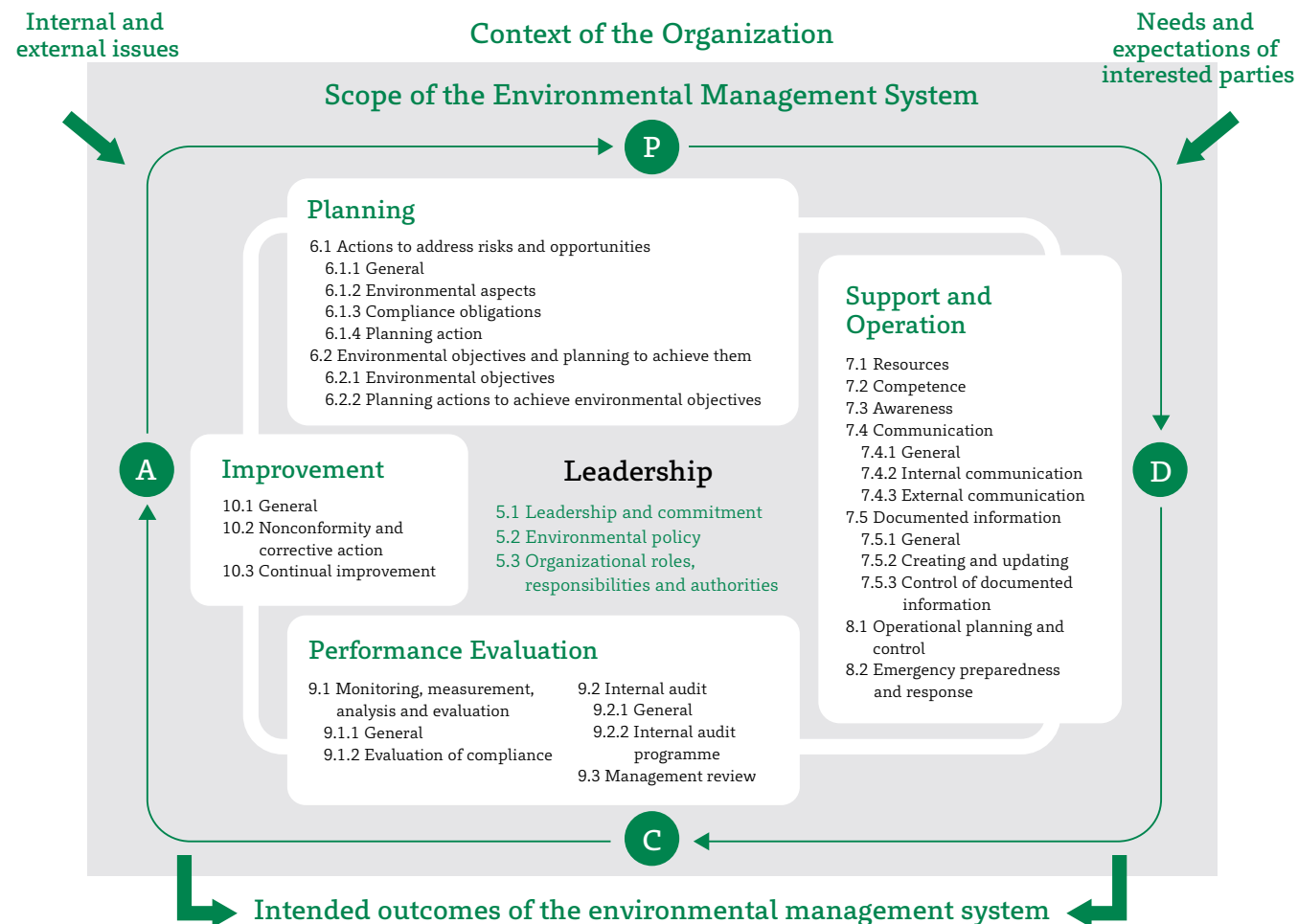
ISO 14001 EMS certification >

<https://www.holdings.toppan.com/en/about-us/our-corporate-approach/iso/iso14001.html>

Independent Assurance Report (see page 186) >

Remedying Soil and Groundwater Pollution (see page 140) >

## Management Cycle under ISO 14001:2015



ISO 14001 Certification

(as of fiscal 2024: 61 systems, 98 sites)

TOPPAN Group ISO 14001 Certification

Division, Company, or Site	Registrar	Registration Date
Electronics Division (TOPPAN Inc.)	JQA	7/1998
Environmental Design Subdivision [Kashiwa Plant and Satte Plant of TOPPAN Decor Products Inc.] (Living & Industry Division)	GCC	3/2000
Head Office and Saitama Plant (Livrectech Co., Ltd.)	JCQA	7/2001
Fukushima Plant [including Takino Plant, Sagamihara Plant] (Toppan Infomedia Co., Ltd.)	JUSE	11/2001
TOPPAN Group Takino Site	JQA	1/2002
Azusawa Site, Atago Site, Kawaguchi Site, Sagamihara Site, Numazu Site, Sekijuku Site (Toppan Logistics Co., Ltd.)	GCC	1/2002
Tokyo-based sites of Information & Communication Division (TOPPAN Inc.)	SAI GLOBAL	2/2002
Fukusaki Plant [including Fukusaki Plant of Toppan Plastic Co., Ltd.] (Toppan Packaging Products Co., Ltd.)	JQA	7/2002
Tosho Printing Co., Ltd.	Intertek	5/2003
Gunma Central Plant (Toppan Packaging Products Co., Ltd.)	JQA	7/2003
Mito Plant (Toppan Packaging Products Co., Ltd.)	GCC	1/2004
Fukuyama Plant (Toppan Communication Products Co., Ltd.)	GCC	1/2004
Hachioji R&D Center (TOPPAN Edge Inc.)	JQA	3/2004
Fukuroi Plant (Toppan Communication Products Co., Ltd.)	JQA	8/2004
Tamana Plant, Tosu Center (Toppan Communication Products Co., Ltd.)	JQA	1/2005
Higashinihon Subdivision (TOPPAN Inc.)	GCC	3/2005
TOPPAN Technical Research Institute (TOPPAN Holdings Inc.)	JQA	5/2005
Sapporo Plant, Chitose Plant (Hokkaido Subdivision, TOPPAN Inc.)	GCC	6/2005
Satte Plant (Toppan Plastic Co., Ltd.)	SAI GLOBAL	12/2006
Ranzan Plant, Kyushu Plant (Toppan Packaging Service Co., Ltd.)	JQA	2/2007
Sagamihara Plant (Toppan Packaging Products Co., Ltd.)	SAI GLOBAL	3/2007
Osaka Sakurai Plant, Hiroshima Plant, Nagoya Center (Toppan Communication Products Co., Ltd.)	JQA	4/2007
Kyushu Subdivision (Nishinihon Division, TOPPAN Inc.)	GCC	1/2008
Kochi Plant (Toppan Electronics Products Co., Ltd.)	BUREAU VERITAS	2/2008
Head office, Kansai branch (Toppan Techno Co., Ltd.)	SAI GLOBAL	3/2009
Sodegaura Beverage Plant (Toppan Packaging Service Co., Ltd.)	SAI GLOBAL	4/2009
Fukaya Plant (Toppan Packaging Products Co., Ltd.)	GCC	3/2010
Chubu Division (TOPPAN Inc.)	JQA	12/2010
Gunma Plant (Tamapoly Co., Ltd.)	JQA	2/2011
Takiyama Plant, Fussa Plant, Joto Center, CP Manufacturing Department, Niigata Plant, Sendai Center (Toppan Communication Products Co., Ltd.)	JQA	9/2011
Sanda Plant (Tamapoly Co., Ltd.)	JQA	1/2012
Shiga Plant (T&T Enertechno Co., Ltd.)	JQA	3/2013
Tochigi Plant (Tamapoly Co., Ltd.)	JQA	7/2017
Tekscend Photomask Corp.	JQA	9/2024

ISO 14001 Certification of Overseas Subsidiaries

Group Company (Site)	Registrar	Registration Date
Tekscend Photomask France S.A.S.	LRQA	10/2000
Tekscend Photomask Round Rock Inc.	LRQA	11/2001
SIAM TOPPAN PACKAGING CO., LTD.	TUV	4/2002
Tekscend Photomask Chunghwa Inc.	SGS	10/2003
PT. TOPPAN PLASINDO LESTARI	LRQA	11/2004
InterFlex Group UK Head Office & England Facility	BSI	12/2004
InterFlex Group Scotland Facility	BSI	12/2004
Tekscend Photomask Korea Inc.	LRQA	2/2005
Tekscend Photomask Company Limited, Shanghai Xuhui	LRQA	2/2005
TOPPAN SENSING ELECTRONICS (SHANGHAI) CO., LTD.	SGS	2/2007
Giantplus Technology Co., Ltd. Bade Plant T1	SGS	1/2008
TOPPAN Leefung Packaging (Shanghai) Co., Ltd.	NQA	7/2008
TOPPAN Leefung Printing (Dongguan) Co., Ltd.	HKQAA	3/2009
Toppan Speciality Films Pvt. Ltd.	BSI	5/2009
TOPPAN Leefung Specialty Printing (Dongguan) Co., Ltd.	ZYC	5/2009
TOPPAN Leefung Printing (Beijing) Co., Ltd.	ZDHY	11/2009
TOPPAN Security Systems Pte. Ltd.	TUV	8/2010
Kunshan Giantplus Optronics Display Technology Co., Ltd.	SGS	6/2012
TOPPAN Leefung Label Printing (Dongguan) Co., Ltd.	CQC	11/2012
Giantplus Technology Co., Ltd. Hsinchu Plant	SGS	3/2013
Ortustech (Malaysia) Sdn.Bhd	BUREAU VERITAS	9/2014
GRAVITY GROUP INDUSTRY L.L.C	URS	2/2015
TOPPAN Leefung Packaging (Dongguan) Co., Ltd.	DEKRA	5/2016
Giantplus Technology Co., Ltd. Bade Plant T2	SGS	5/2018
TOPPAN DARUI PACKAGING (SHANGHAI) CO., LTD.	NQA	8/2022
TOPPAN Leefung Medical Material (Shanghai) Co., Ltd.	NQA	8/2022
Majend Makcs Co.,Ltd.	TUV	Initial Certification 2024

## Activities

### Environmental Education

Various measures are implemented to improve the environmental literacy of employees based on recent social concerns on the environment, priority topics for year-by-year environmental activities, and other environment-related issues.

We have been holding sessions for rank-based training, optional training, and internal auditor training. E-learning programs are also provided online for all Group employees. The rank-based training includes both group-style sessions and e-learning courses.

Results of Environmental Education (Fiscal 2024)

Training	No. of Trainees
New employee training: General environmental education	449
E-learning course on the TOPPAN Group's sustainability initiatives	27,443
E-learning course for personnel in charge of the environment in fiscal 2024	779
TOPPAN Challenge School (15 courses)	50
TOPPAN Business School (6 courses)	421
Internal environmental auditor training program	181

### Environmental Communication

TOPPAN develops Environmental Communication Activities to share environmental conservation awareness with stakeholders through community involvement initiatives and environmental education for Group employees and individuals outside of the Group. Among the diverse activities organized, we have been engaging in projects with entities from industry, government, academia, and civil society, disclosing environmental performance data on our corporate website, holding neighborhood meetings to report our environmental efforts, and participating in eco exhibitions and consortiums.

### Environmental Incentives for Employees

TOPPAN's Eco-protection Awards System incentivizes Group employees to engage in activities that address climate change. The system provides financial incentives for actions that bring us closer to meeting our reduction targets for greenhouse gas emissions and other environmental impacts.

### Participation in Initiatives and Collaboration with External Parties

#### ● Our Approach

The TOPPAN Group actively participates in and supports domestic and international organizations, initiatives and statements related to sustainability, and works in collaboration with them toward achieving a sustainable society.

#### ● Participation in Initiatives

In the 1990s, as global awareness for environmental conservation increased, the TOPPAN Group established the Toppan Printing Declaration on the Global Environment in 1992 as its basic principle for environmental conservation activities, and has since worked to promote such activities. In April 2009, this Declaration on the Global Environmental was revised as the basic principle for all activities of the TOPPAN Group, becoming the current TOPPAN Group Declaration on the Global Environmental, and we have since taken on a more proactive approach to global environmental protection at our domestic and overseas sites. Regarding climate change, we obtained SBT certification in February 2019 and are working on reductions in greenhouse gas emissions to achieve the targets of the Paris Agreement. In 2021, we established the TOPPAN Group Environmental Vision 2050 to aim for net zero greenhouse gas emissions in Scope 1 & 2 and 3 by 2050. At the same time, we reviewed our company's key performance indicators for “environmental friendly & sustainable production” under Companywide Materiality related to the SDGs and set new numerical targets for the TOPPAN Group Medium-and-Long-Term Environmental Targets for Fiscal 2030. Furthermore, under the TOPPAN Group Environmental Vision 2050, not only decarbonization, but also goals for biodiversity contribution, resource circulation, and optimal water use have been established, enhancing initiatives to address environmental issues overall.

To solve environmental issues, we believe it is important to expand activities not only within our domestic and overseas Group and value chain, but also by collaborating with outside organizations, endorsing environmental initiatives, and working on information disclosure to broaden our impact.

## ● Climate Change Initiatives (as of April 2025)



Science Based Targets (SBT) >

<https://sciencebasedtargets.org/>



Task Force on Climate-related Financial Disclosures (TCFD) >

<https://www.ifrs.org/sustainability/tcfid/>



GX-League >

<https://gx-league.go.jp/en/>

## ● Other Initiatives (as of April 2025)



United Nations Global Compact >

<https://www.unglobalcompact.org/>

## Initiatives related to the Circular Economy



Japan Clean Ocean Material Alliance >

<https://cloma.net/english/>



Japan Partnership for Circular Economy >

<https://j4ce.env.go.jp/en>



Circular Partners (in Japanese) >

<https://www.cps.go.jp/>

## Initiatives Related to Natural Capital and Biodiversity



Task Force on Nature-related Financial Disclosures (TNFD) >

<https://tnfd.global/>



30by30 Alliance for Biodiversity (in Japanese) >

<https://policies.env.go.jp/nature/biodiversity/30by30alliance/>



Keidanren Nature Conservation Council >

<https://www.keidanren.net/kncf/en>



Keidanren Initiative for Biodiversity Conservation >

[https://www.keidanren-biodiversity.jp/logo\\_en.php](https://www.keidanren-biodiversity.jp/logo_en.php)



Japan Business Initiative for Biodiversity >

<https://en.jbib.org/>